



Irrigation

Flow
Surfer

Tired of rinse-repeat
routines?
Irrigate smarter—with
Dual Rinse HEDP.

Dual Rinse® HEDP

Innovation in the Heart of the Swiss microtech valley

Since 1931, in the heart of the Swiss microtech valley, we have been pushing the limits of endodontics by combining technology and innovation.

Our mission is to provide solutions that respect the complex anatomy of teeth while improving the treatment efficiency. With game-changers such as XP-endo Rise, RACE EVO, R-Motion, Finisher and TotalFill, we have transformed how endodontics is practiced, giving clinicians better tools to meet challenges with confidence.

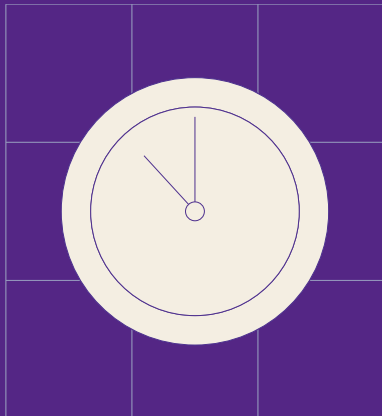
Irrigation

Flow Surfer

Endodontic is about precision and flow - and nothing should disrupt your rhythm. With every rinse, every switch, and every pause, momentum is lost. Dual Rinse HEDP changes that. With a single step, it cleans, dissolves, and prepares the canal, without breaking the flow. Fewer syringes. Fewer transitions. Just pure, uninterrupted motion from start to finish. It's time your irrigation moved with your pace. One capsule. One protocol. One less thing to think about. That's how we empower endo.

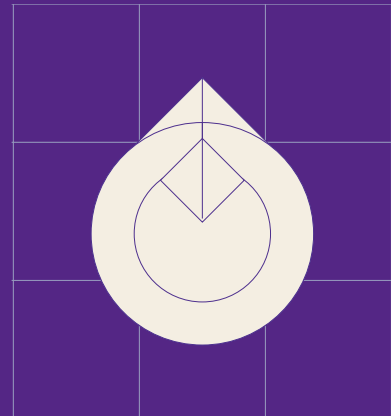


Dual Rinse HEDP redefines endodontic irrigation by combining essential chemical actions into one continuous solution—supporting speed, focus, and clinical clarity.



Time Efficiency

Dual Rinse HEDP helps you save time and reduce unnecessary steps—so you can stay focused on treatment, not on the transitions between, while improving both the shaping and irrigation phases of treatment.



Combined Chemical Action

With Dual Rinse HEDP, you achieve complete cleaning—dissolution, chelation, and disinfection—without ever interrupting your flow.



Time Efficiency

Dual Rinse HEDP replaces sequential irrigants like EDTA and saline rinses with a single solution. Mixed with NaOCl, it supports uninterrupted irrigation throughout canal instrumentation. By reducing syringe changes and eliminating transitional rinses, you save valuable chair time—especially during multi-canal or retreatment procedures—while maintaining procedural focus.

Combined Chemical Action

In conventional irrigation protocols, sodium hypochlorite (NaOCl) and chelating or disinfecting agents are typically used separately due to their chemical incompatibility. Dual Rinse HEDP offers a different approach. Its formulation is compatible with NaOCl, allowing both solutions to be used simultaneously without compromising their respective effects. This combined action supports an efficient irrigation process and helps simplify clinical protocols.

Dual Rinse HEDP delivers dual-function performance, enabling simultaneous smear layer removal, tissue dissolution, and disinfection. Its formulation keeps chemical activity consistent during instrumentation, reducing debris buildup and procedural variability. With fewer steps and variables, clinicians are able to achieve clean canals with greater ease and predictability.



Simplicity means nothing without performance.

"Dual Rinse HEDP redefines efficiency in irrigation. By combining smear layer removal and tissue dissolution into a single, continuous step, it eliminates the procedural fragmentation we've long accepted as standard.

The result is a cleaner canal, a more fluid workflow, and a noticeable reduction in chair time with no compromise in disinfection.

It brings consistency to a step that has traditionally been difficult to standardize."

Pr. Matthias Zehnder
DMD, PhD / Zürich,
Switzerland



Curious? Here's more details about Dual Rinse HEDP:

All-in-one Irrigation Solution

Simplify continuous irrigation, effectively removing debris and the smear layer without requiring additional EDTA or intermediate rinsing with water. Enhance adhesion to the root dentin for more effective root canal treatment.

Effortless Application

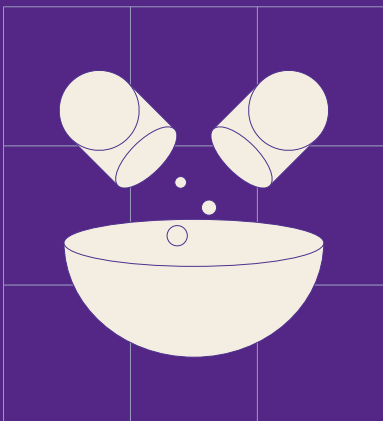
Simply mix the powder with NaOCl, stir, and use immediately in your syringe for quick, easy irrigation and activation during root canal procedures.

Reduces Shaping Time

By significantly reducing working time through its unique simultaneous chelation, Dual Rinse HEDP simplifies the irrigation phase, boosting instrumentation efficiency.

Reduces Stress on Files

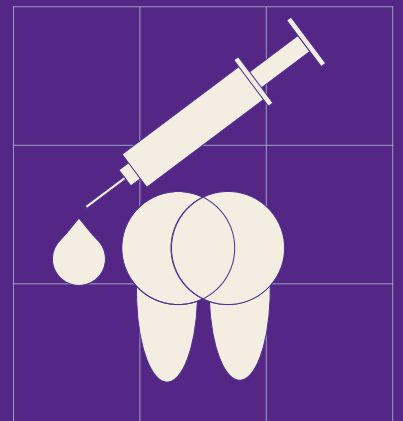
Lowering torsional load during shaping, Dual Rinse HEDP helps protect rotary instruments, optimizing both safety and efficiency throughout the procedure.



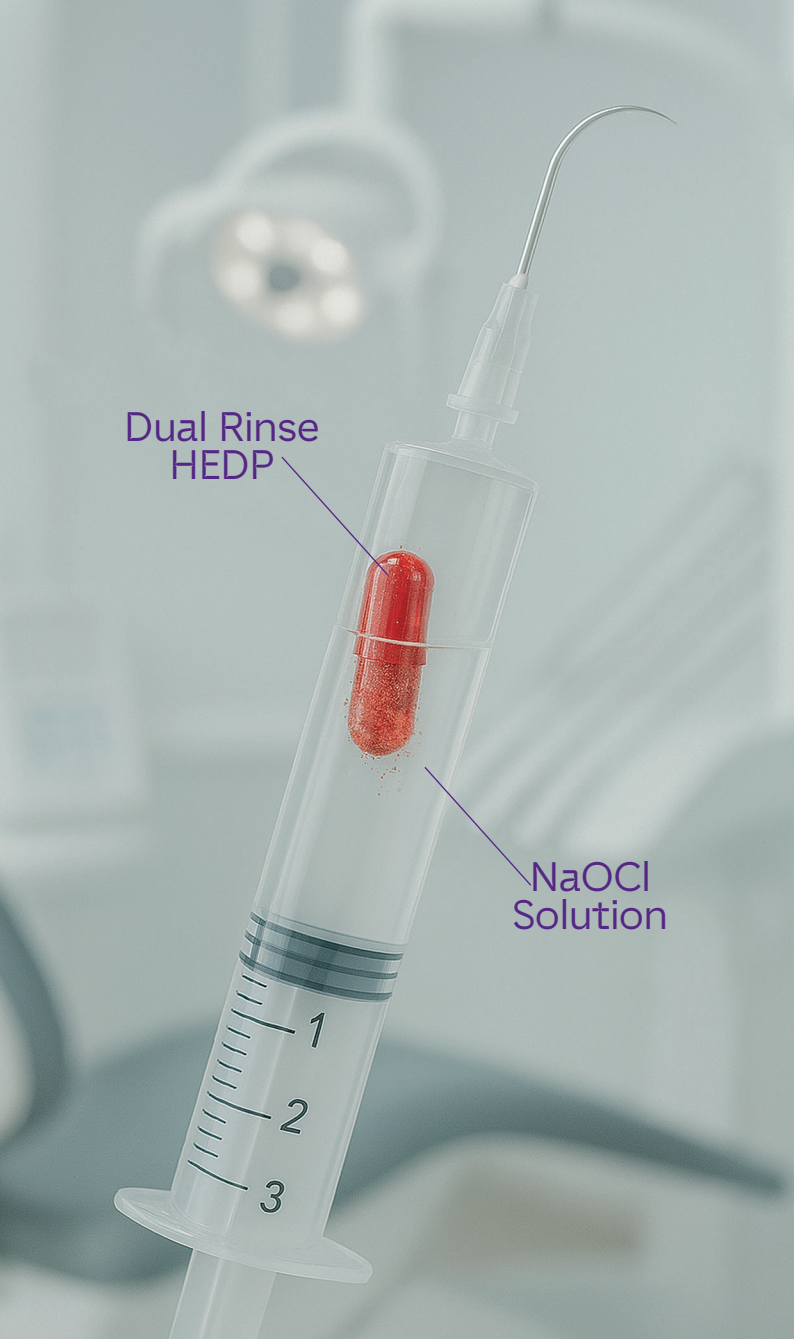
Add



Stir



Apply



Proven Capability

A scientifically proven soft chelator and compatible with NaOCl ensures reliable performance.

References

Dual Rinse® HEDP		
Cap jar		
	10 capsules	08.660.00.001.FK
	30 capsules	08.660.00.002.FK
	100 capsules	08.660.00.003.FK

Find a partner:



Empower Endo



Welcome to the heart of the Swiss microtech valley.

For nearly a century, we have been constantly re-inventing and challenging what we thought we knew.

We strive to create innovations for new ways of working: more respectful, more efficient, more agile, more ergonomic, and safer—serving new generations, promoting new visions of life, for us, for you, and for patients.

We embrace change that empowers endo.

FKG | Change the game.

Enter our game-
changing universe



Check out
our website



www.fkg.ch

FKG Dentaire Sàrl
Le Crêt-du-Loche 4
2322 Le Crêt-du-Loche
Switzerland

+41 32 924 22 44
info@fkg.ch